

The three sorts of Trades, of which there died most, were Coffin-makers (which took measure of the dead Bodies) Surgeons, and Shoe-makers.

The Care that was taken, and the Medicines that were used, did great Service. I was told that *Theriaca* did little good; and they observed the same also at *Dantzick*.

XXXVIII. *Some Anatomical Observations.* By
Mr. William Cheselden, Surgeon, F. R. S.

FIG. 8. *Tab. VI.* shews the beginning of the *Aorta*, *Tab. VI.* or great Artery, from the Heart of a Woman who died of a Dropsy. *A.* is the *Aorta*. *B. B.* two Chalk-stones which possessed the Place of the Semilunar Valves. The left Ventricle of the Heart was dilated to twice its Natural Magnitude. We supposed that these Stones occasioned the Dropsy, by obstructing the Valves, and hindring a regular Distribution of the Blood.

Fig. 9. shews a Bone taken from the *Falx*, or first Process of the *Dura Mater*, of a Man who died of violent Head-aches.

Fig. 10. shews a Bone taken from the between the Ventricles of the Heart of a Man, who died Hydropic and Tabid. In this Body the whole *Pericardium* adher'd to the Heart.

Fig. 11. shews the Optick Nerves; the right Nerve being wasted and discoloured: The Eyes both appeared to be very good. I had not an opportunity of inquiring into the Case of this Person; but I suppose it must have been a *Gutta Serena*.

O o

I opened

I opened another Eye of a Man who died of that Distemper; in which I found that part of the Nerves, which is within the *Cranium*, crushed flat by the anterior Lobes of the Brain, their Ventricles being full of Lymph.

Fig. 12. shews three Spleens taken from one Body.

Fig. 13. Two Spleens taken from a Man.

Fig. 14. Two Spleens taken from a Woman.

N. B. That in all these three Cases of the Spleens, each had proper Vessels, but the Arteries only are there express'd; and that the Spleens in each Body taken together were but equal in Magnitude to the one we usually meet with.

A Heart, with the *Vena Azygos* inserted into the right Auricle; and the Descending *Cava* coming round the *Basis* of the Heart, above the *Aorta* and Pulmonary Vessels, to enter the Auricle at the lower part with the Ascending *Cava*.

An *Urter* double two Thirds of its length next the Kidneys, and distended by Stones passing through it.

The *Tubæ Fallopianæ* impermeable, and without *Alæ Vespertilionis*; the outer Ends being connected to the *Testes*.

Fig. 1.

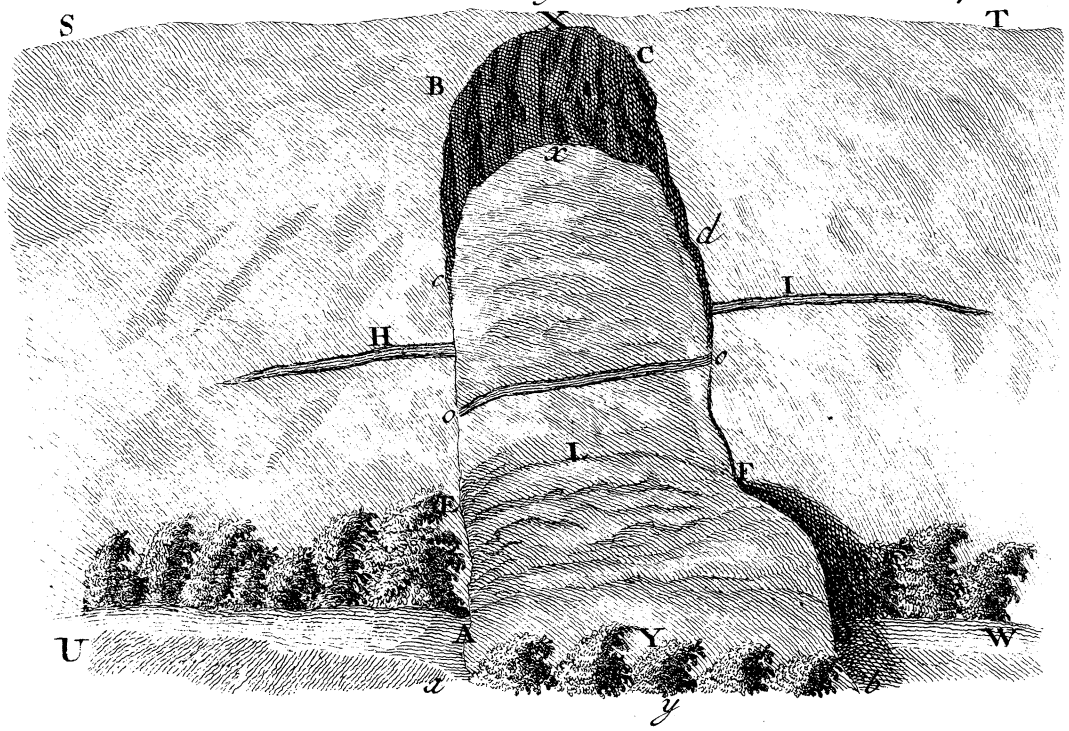


Fig. 5.

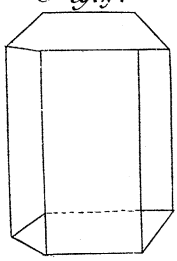


Fig. 6.

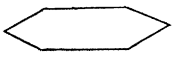
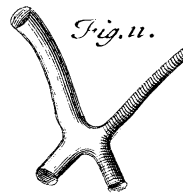
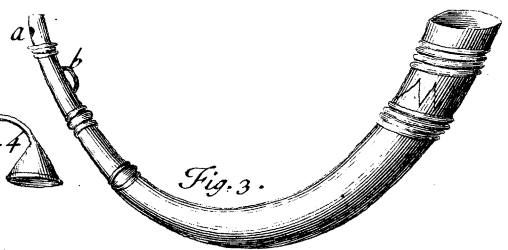
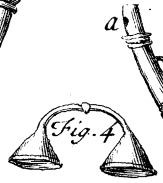
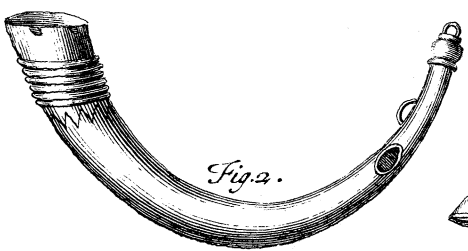


Fig. 12.



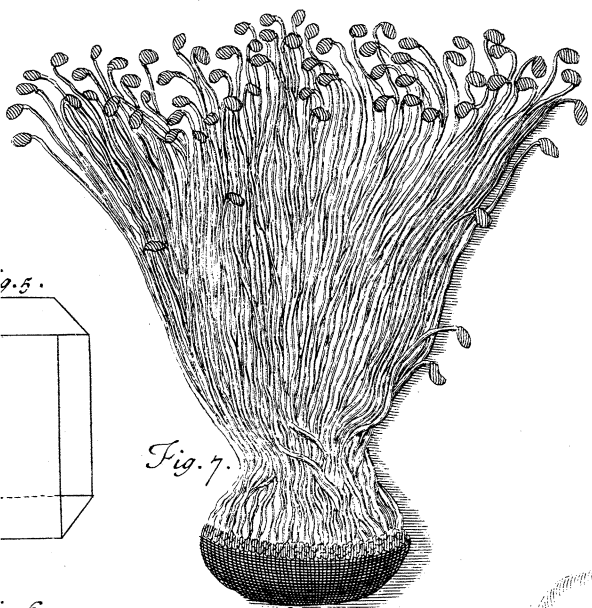
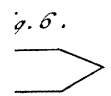
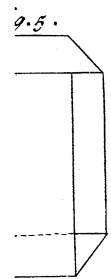


Fig. 7.

Adiantum aurcum marinum &c.



Fig. 9.

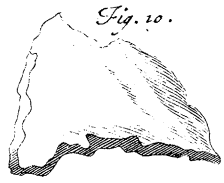


Fig. 10.

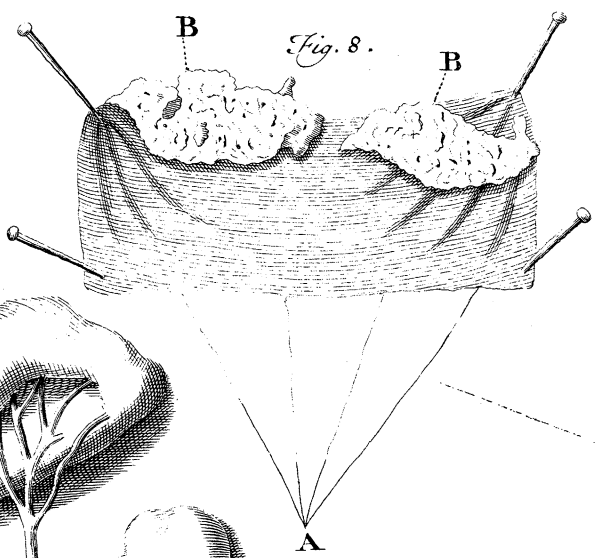


Fig. 8.

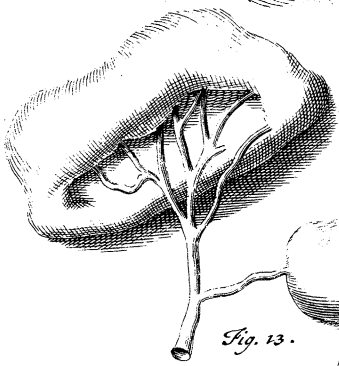


Fig. 13.

Fig. 12.

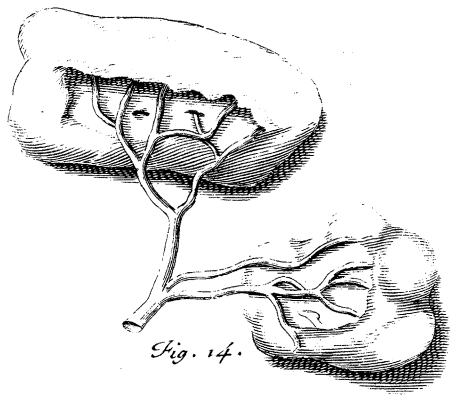
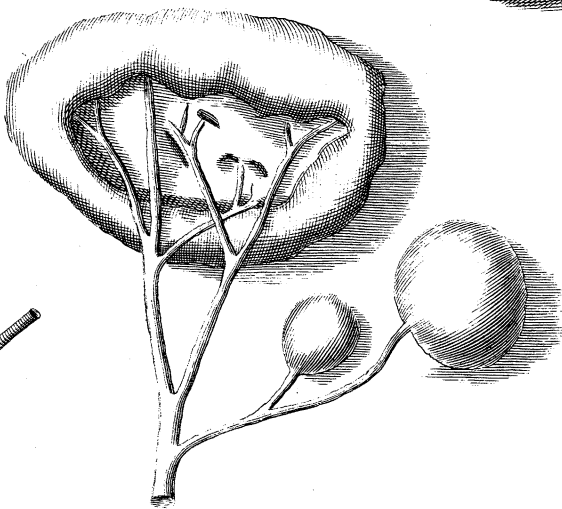
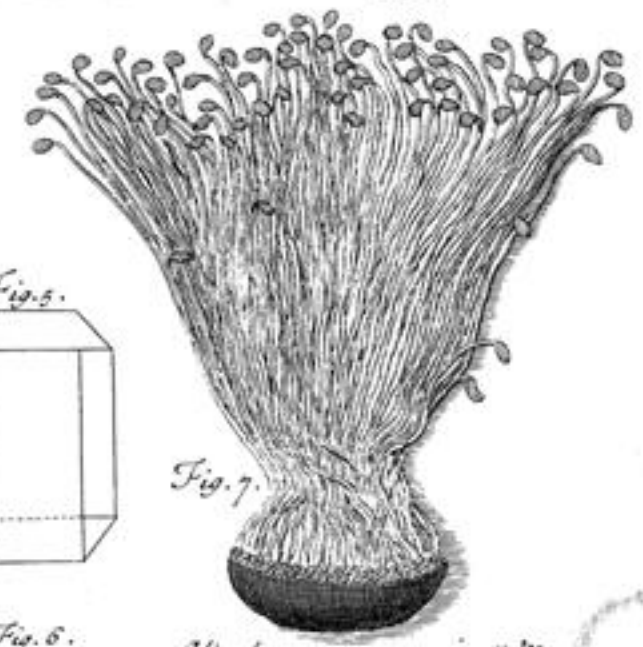
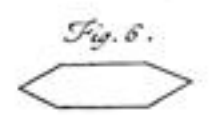
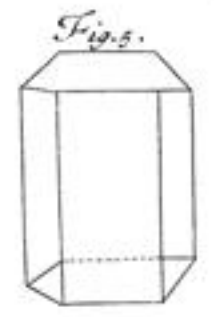
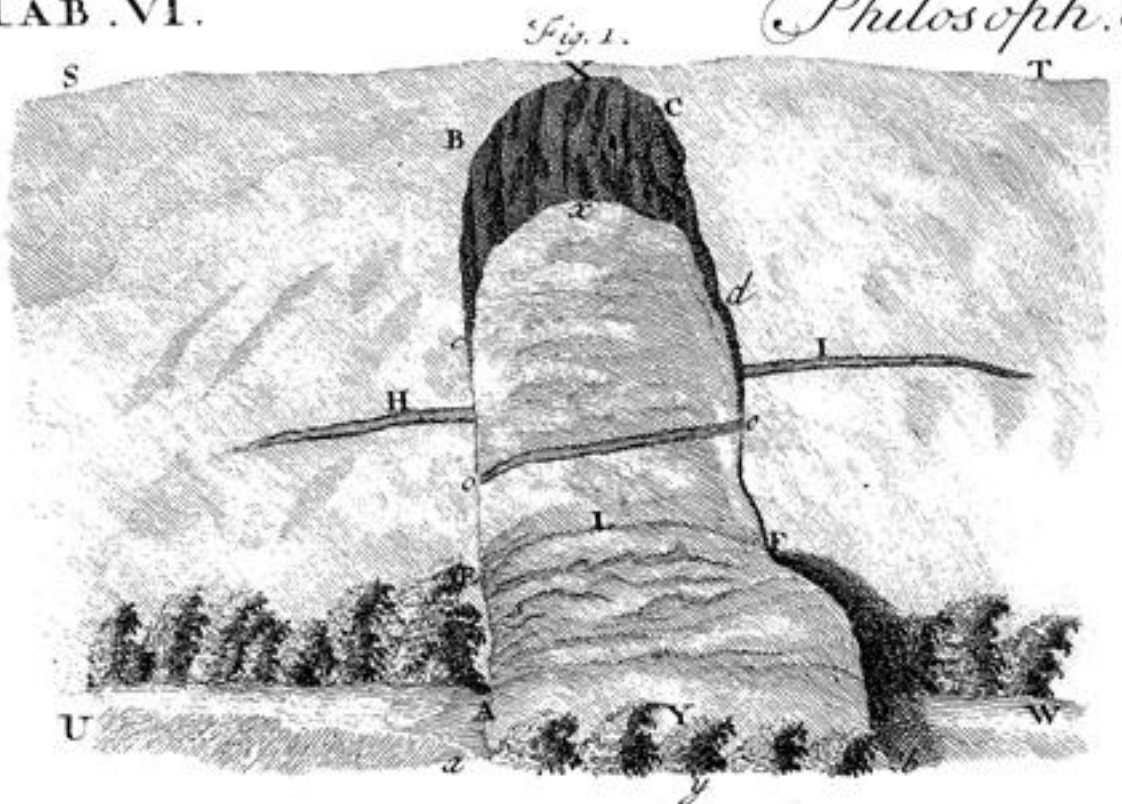


Fig. 14.



Fig. 11.



Adiantum aurum marinum L.

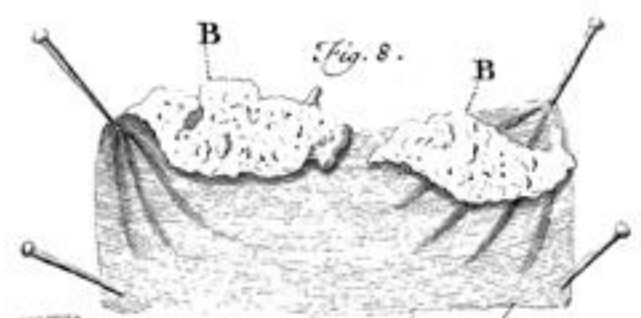


Fig. 13.

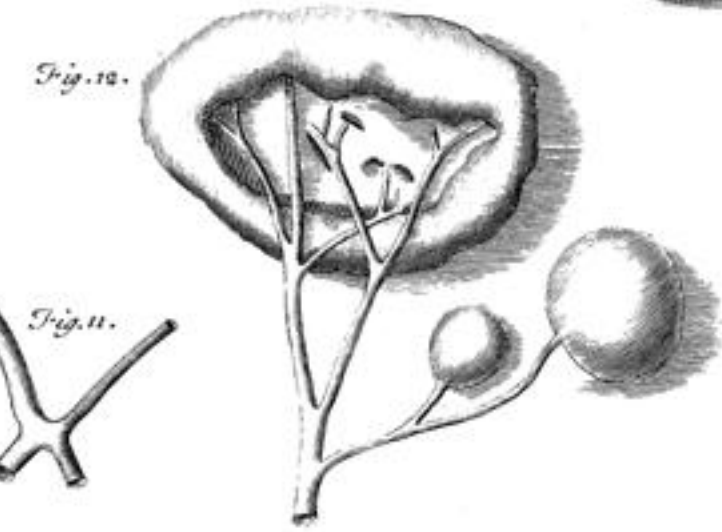


Fig. 11.



Fig. 2.



Fig. 4.



Fig. 3.

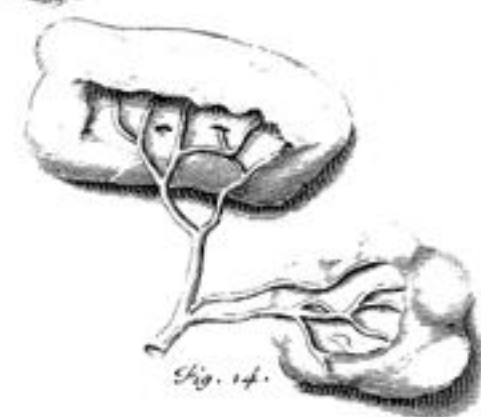


Fig. 14.